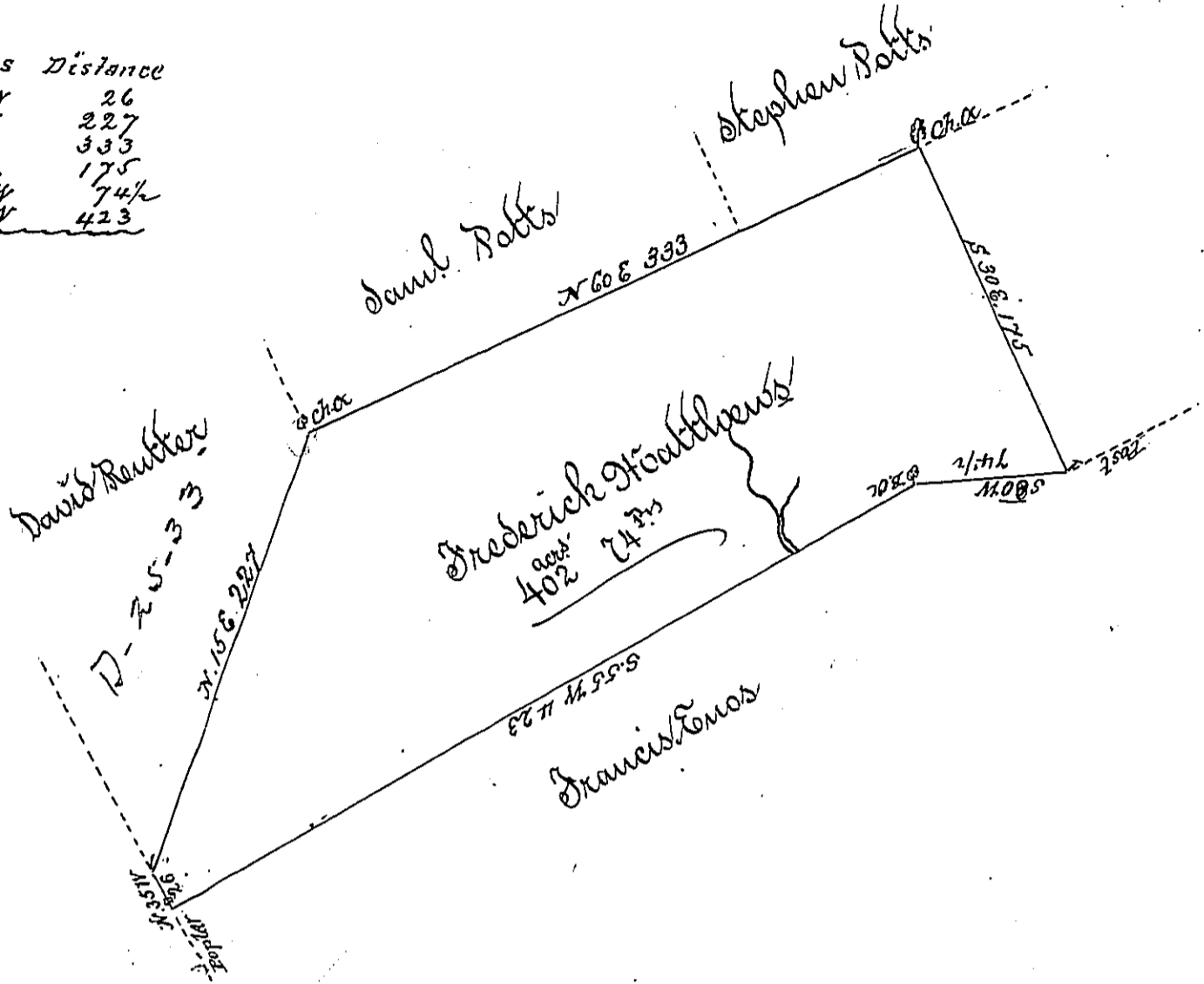


Courses	Distance
N 35 W	26
N 15 E	227
N 60 E	333
S 30 E	175
S 80 W	74 1/2
S 55 W	423



A Draft of a tract of land situate in Hillford township Hillin County containing four hundred & two acres & 74 perches by the allowance of six feet for roads be^{ing} surveyed for Frederick Heathcote April 14th 1794 in pursuance of a warrant dated Jan^y 27th 1794 ~

By Daniel Brodhead Esq^r.
 Sur^v Gen^l of Pennsylvania }

James Harris D. D.

IN TESTIMONY that the above is a copy of the original remaining on file in the Department of Internal Affairs of Pennsylvania, made conformably to an Act of Assembly approved the 16th day of February, 1833, I have hereunto set my Hand and caused the Seal of said Department to be affixed at Harrisburg, this second day of October 1900.

James W. Patton
 Secretary of Internal Affairs.